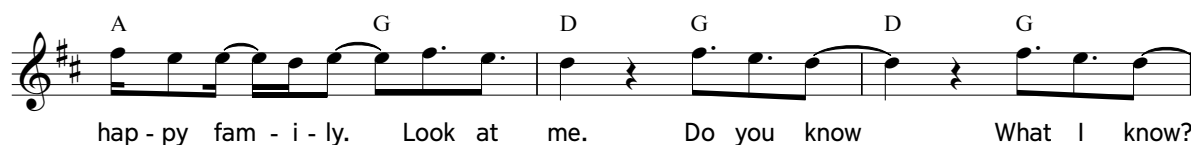
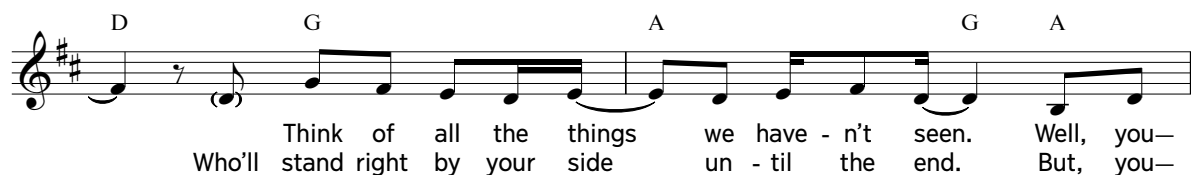
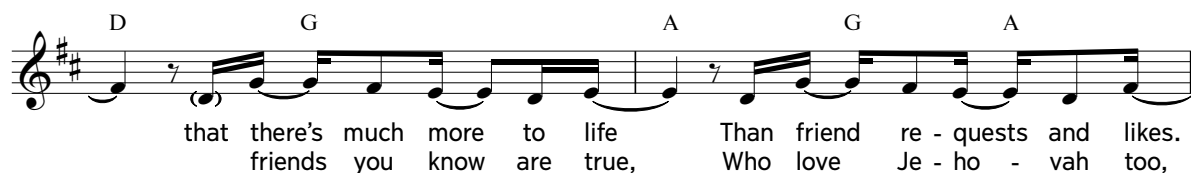
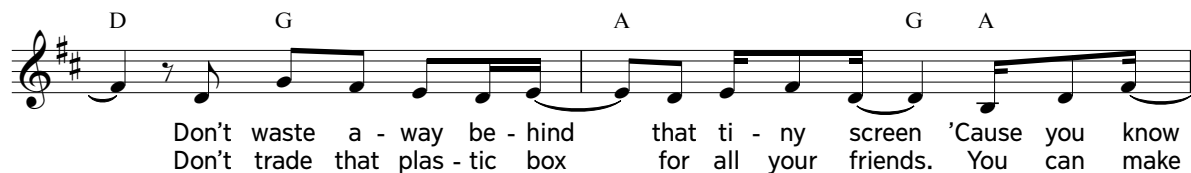
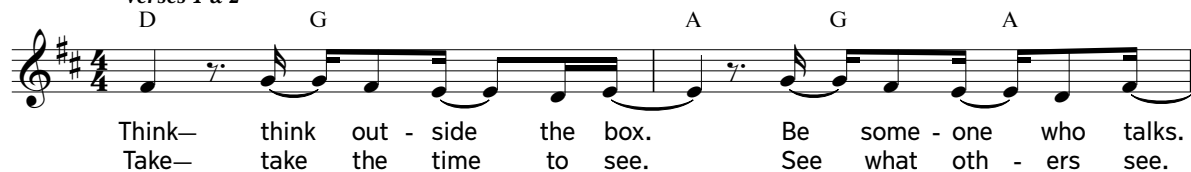


Look at Me

Verses 1 & 2



Look at Me

[illegible]

That you be - long. Put down the phone, and look at me.

The musical notation for the Interlude of "The Wind" is shown on a single staff. It begins with a treble clef and a key signature of two sharps (F# and C#). The tempo is marked "Allegretto". The notation includes a series of chords: Bm, A, G, D, followed by a section labeled "Interlude" which consists of a melodic line with eighth and sixteenth notes, and then A and Bm. The piece ends with a double bar line.

me. Put down the phone, and look at me.

The Bridge section of the song is written in treble clef with a key signature of two sharps (F# and C#). It begins with a whole rest on the A note, followed by a whole rest on the G note, and another whole rest on the D note. This is followed by a double bar line, then a quarter rest on the A note, and a quarter note on the Bm note. The word "Bridge" is written above the staff. The melody continues with a half note on the A note, a quarter note on the G note, a quarter note on the F# note, a quarter note on the E note, a quarter note on the D note, a quarter note on the C# note, and a quarter note on the Bm note. The section ends with a half note on the A note, a quarter note on the G note, a quarter note on the F# note, and a quarter note on the E note.

Don't let it play you for a fool.

What you're get - ting could be fact or could be fic - tion.

Life in the cloud can be so cruel.

Why don't you come back down to earth, con - verse, and re -

verse the ad - dic - tion? Put— put down your de - vice

'Cause if you don't think twice, The best in life will sure -

Look at Me

